



Environmental Product Declaration

Global GreenTag EPD Program:

Compliant to EN15804+A2 2019



HPL Compact Laminate  
Natural Nuance and Chalk, Impressions,  
Absolute Matte, CustomArt® 1mm  
332 Bay Rd, Cheltenham

Laminex®





# Laminex<sup>®</sup>

## HPL Compact Laminate

### Mandatory Disclosures

<b>EPD type</b>	Cradle to grave A1-C4 +D	<b>Issue Date</b>	29 July 2023		
<b>Product Range</b>	HPL <sup>1</sup> Compact Laminate	<b>Valid Until</b>	29 July 2028		
<b>EPD Number</b>	LGHP02 2023EP	LGHP01 2023EP	LGHP05 2023EP	LGHP06 2023EP	
<b>Code Name</b>	Natural Nuance and Chalk 0.7mm	Absolute Matte	CustomArt <sup>®</sup> 1mm	Impressions 0.7mm	
<b>Product Photograph</b>					

### Demonstration of Verification

<b>PCR</b>	Standard EN 15804+A2 2019 serves as core Product Category Rules (PCR) [1]. Wall and Ceiling Linings Sub-PCR WCL:2023 as well as Fitted Cabinetry Sub-PCR FIC:2023 also applies [2 and 3].	
<input checked="" type="checkbox"/> <b>Internal</b>	 29 July 2023  25.07.2023  21/12/2023	LCA Developed by Delwyn Jones, The Evah Institute  LCA Reviewed by Direszni Naiker The Evah Institute EPD Reviewed by David Baggs, Global GreenTag International Pty Ltd
<input checked="" type="checkbox"/> <b>External</b>	 24.07.2023	Third Party Verifier <sup>a</sup> Mathilde Vlieg Malaika LCT  a. Independent external verification of the declaration and data, mandatory for business-to-consumer communication according to ISO 14025:2010 [2].
<b>Communication</b>	This EPD discloses potential environmental outcomes compliant with EN 15804 for business-to-business communication.	
<b>Comparability</b>	Construction product EPDs may not be comparable if not EN15804 compliant. Different program EPDs may not be comparable. Comparability is further dependent on the product category rules and data source used.	
<b>Reliability</b>	LCIA results are relative expressions that do not predict impacts on category endpoints, exceeding of thresholds, safety margins or risks.	
<b>Owner</b>	This EPD is the property of the declared manufacturer.	
<b>Explanations</b>	Further explanatory information is available at <a href="mailto:info@globalgreentag.com">info@globalgreentag.com</a> or by contacting <a href="mailto:certification1@globalgreentag.com">certification1@globalgreentag.com</a> [3].	

EPD Program Operator	LCA and EPD Producer	Declaration Owner
Global GreenTag International Pty Ltd L38, 71 Eagle St., Brisbane City QLD 4000 Australia Phone: +61 (0)7 33 999 686 <a href="http://www.globalgreentag.com">http://www.globalgreentag.com</a>	Ecquate Pty Ltd PO Box 123 Thirroul NSW 2515 Australia Phone: +61 (0)7 5545 0998 <a href="http://www.ecquate.com">http://www.ecquate.com</a>	Laminex Industries 90-94 Tram Road, Doncaster VIC 3192 Australia Phone: +61 132 136 <a href="http://www.laminex.com.au">http://www.laminex.com.au</a>



<sup>1</sup> High Pressure Laminate (HPL)  
LaminexHP02-3HP05-6CompactBundledEPD15804+A22019C2F@Evah01Aug2023v3



**Program Description**

<b>EPD type</b>	Cradle to grave A1 to C4 + D as defined by EN 15804 [1]																		
<b>System boundary</b>	The system boundary with nature includes material and energy acquisition, processing, manufacture, transport, installation, use plus waste arising to end of life.																		
<b>Stages included</b>	Stages A1-3 A4-5, B1-4, C1 to C2 and C4 D1 to D3																		
<b>Stages excluded</b>	No stage was excluded but flows and results for B5-B7, C3 and D3 were all zero.																		
<b>Scope Depiction</b>	Figure 1 depicts all modules being declared including some with zero results. Any module not declared (MND) does not indicate a zero result.																		
<b>Model</b>	Actual																		
<b>Information</b>	Building Life Cycle Assessment																		
<b>Stages</b>	Product												Use		End-of-Life		Potential Supplementary		
<b>Data Modules</b>	Product			Construct		Fabric					Operate		End-of-Life		Benefit & load beyond system				
<b>Unit Operations</b>	A1	A2	A3	A4	A5	B1	B2	B3	B4	B5	B6	B7	C1	C2	C3	C4	D1	D2	D3
<b>Cradle to Gate+ Options &amp; Grave</b>	Resources	Transport	Manufacture	Transport	Construct	Use	Maintain	Repair	Replace	Refurbish	Energy use	Water use	Demolish	Transport	Process Waste	Disposal	Reuse	Recovery	Recycling

Figure 1 EPD Life Cycle Modules Cradle to Grave

**Data Sources**

<b>Primary Data</b>	Data was collected from primary sources 2019 to 2022 including the manufacturer and suppliers' standards, locations, logistics, technology, market share, management system in accordance with EN ISO 14044:2006, 4.3.2, [4]. All are biochemical-physical allocated none are economically allocated.
<b>A1-A3 Stage inclusions</b>	Operations include all known raw material acquisition, refining, processing plus scrap or material reuse from prior systems; electricity generated from all sources with extraction, refining & transport plus secondary fuel energy and recovery processes. Also, transport to factory gate; manufacture of inputs, ancillary material, product, packaging, maintenance, replacement plus flows leaving at end-of-waste boundary and fate of all flows at end of life.
<b>Variability</b>	Significant differences of average LCIA results are declared.
<b>Chemicals of Concern</b>	Contains no substances in the European Chemicals Agency "Authorised or Candidate Lists of Substances of Very High Concern" (SVHCs).

**Data Quality**

Data cut-off & quality criteria complies with EN 15804 [1] The LCA used background data aged <10 years and quality parameters tabled below.

Background	Data Quality	Parameters and Uncertainty (U)			
<b>Correlation</b>	<b>Metric σg</b>	U ±0.01	U ±0.05	U ±0.10	U ±0.20
<b>Reliability</b>	<b>Reporting</b>	Site Audit	Expert verify	Region	Sector
	<b>Sample Including</b>	>66% trend	>25% trend	>10% batch	>5% batch
<b>Completion</b>	<b>Cut-off</b>	>50%	>25%	>10%	>5%
	<b>Data Age</b>	0.01%w/w	0.05%w/w	0.1%w/w	0.5%w/w
<b>Temporal</b>	<b>Duration</b>	<3 years	≤5 years	<7.5 years	<10 years
	<b>Typology</b>	>3 years	<3 years	<2 years	1 year
<b>Technology</b>	<b>Typology</b>	Actual	Comparable	In Class	Convention
<b>Geography</b>	<b>Focus</b>	Process	Line	Plant	Corporate
	<b>Range</b>	Continent	Nation	Plant	Line
	<b>Jurisdiction</b>	Representation is Global. Africa, North America, Europe, Pacific Rim			



**Product Information**

The Laminex Group is a leading manufacturer, distributor and marketer of decor board and surfaces.

<b>Range Names</b>	HPL Compact Laminate			
<b>Brand Name</b>	Natural Nuance and Chalk 0.7mm	Absolute Matte	CustomArt® 1mm	Impressions 0.7mm
<b>Code name</b>	NC	AM	CA	IM
<b>Coverage</b>	0.85kg/m <sup>2</sup>	0.85kg/m <sup>2</sup>	1.35kg/m <sup>2</sup>	0.85kg/m <sup>2</sup>
<b>Factory warranty</b>	10 years use in interior residential and commercial buildings			
<b>Manufacturer address</b>	Laminex Industries 332 Bay Rd., Cheltenham VIC 3192 Australia			
<b>Site representation</b>	Australasia			
<b>Geographical Area</b>	Use and disposal as for Australasia			
<b>Application</b>	Benchtops & Cabinetry			
<b>Function in Building</b>	Benchtops & Cabinetry			
<b>Lifetime [5,6]</b>	20 years Reference Service Life (RSL) [ISO 15686]			
<b>Declared unit</b>	Declared Product given coverage/kg in building interiors			
<b>Functional unit</b>	20 years interior use of declared product/kg cradle to grave and beyond			

**Product Components**

This section summarises factory components, functions, source nation and % mass share. In product content listed below the % mass has a ±5% range and a confidence interval that is 90% certain to contain true population means at any time. Listing such 90±5% certainty considers normal resource acquisition, supply chain, sedimentation, seasonal, manufacturing and product variation over this EPD’s validity period. This also allows for intellectual property protection whilst ensuring fullest possible transparency.

Function	Component	Cradle	NC %	AM %	CA %	IM %
<b>Filler</b>	Cellulose Fibre	Global	>65<66	>58<59	>64<65	>65<66
<b>Binder</b>	Phenol Formaldehyde	Germany	>23<24	>20<21	>21<22	>24<25
<b>Coating</b>	Amino acrylate & lacquer	Germany	N/a	>16<18	N/a	N/a
<b>Binder</b>	Melamine Formaldehyde	Germany	>6<7	>3<4	>2<3	>3.0 <4.0
<b>Others</b>	Plasticiser, fire retarder, catalyst, biocide, wetting & release agents	Global	each <1.0	each <1.0	each <1.0	each <1.0
<b>Packaging</b>						
<b>Crate</b>	Timber	Australia		>3.0 <4.0		
<b>Pallet</b>	Timber	Australia		>1.5 <2.0		
<b>Wrap etc</b>	Polymers	Global		>1.0 <1.5		
<b>Covers</b>	MDF	Australia		>0.1 <0.2		
<b>Straps</b>	Polyester	Global		>0.05 <0.10		

**Product Functional & Technical Performance Information**

This section provides manufacturer specifications and additional information.

<b>Specifications, Maintenance, Fire, Safety &amp; Installation</b>	<a href="https://www.laminex.com.au/trade">https://www.laminex.com.au/trade</a>
<b>AS/NZS standard classification</b>	Group 3
<b>Panel dimensions length*width ±10mm</b>	3.6*1.5m or 3.6*0.75m
<b>VOC Specific Area Emission Rate</b>	0.5mg/m <sup>2</sup> /hr

# Laminex<sup>®</sup>

HPL Compact Laminate

## System Analysis Scope and Boundaries

Stages A1 to 3 model actual operations. Stage A4 to C4 are model scenarios.

Typical scenarios are assumed to forecast unit operations as described in the next section.

Figure 2. shows included processes in a cradle to grave system boundary to end of life fates to unshown beyond the boundary reuse, recycling or landfill grave.

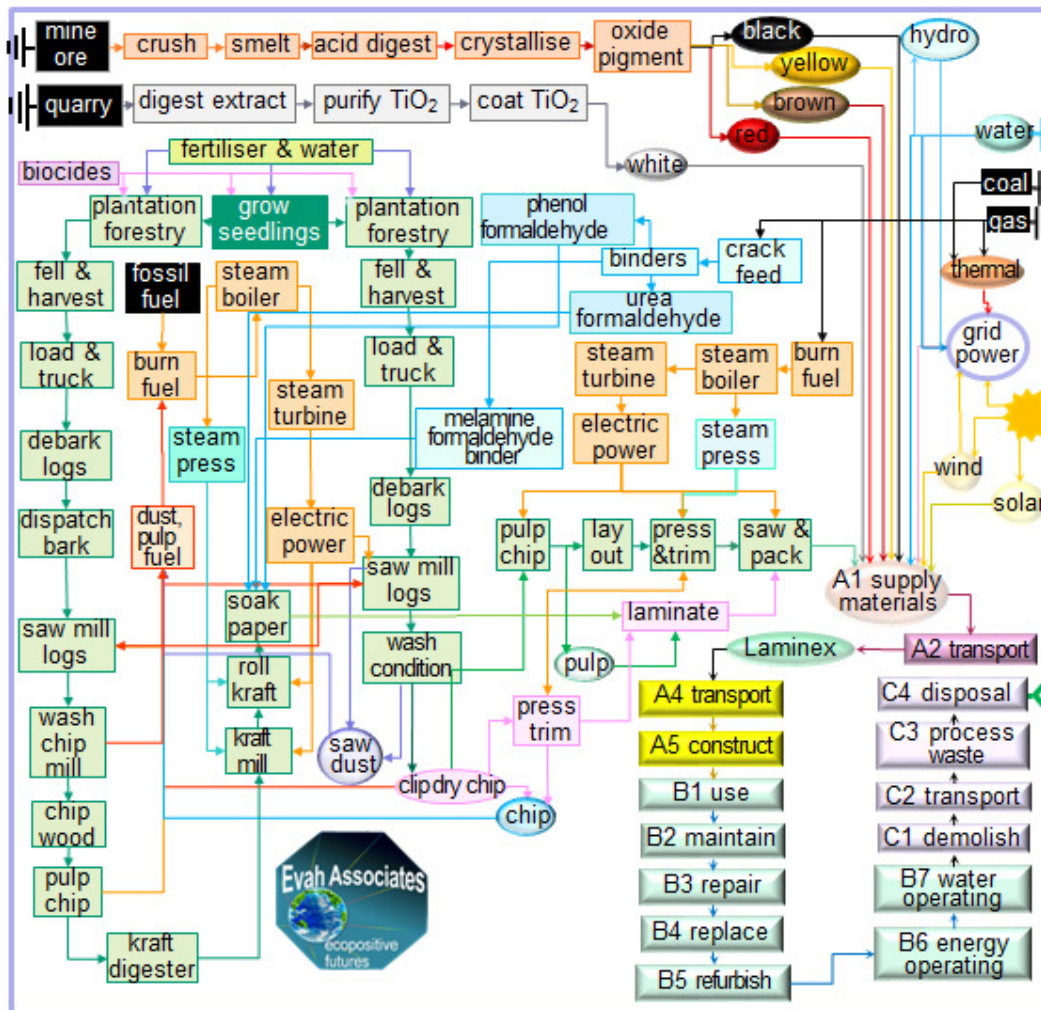


Figure 2. Product Process Flow Chart



**Scenarios for Modules/Functional Unit**

Stages A1 to A3 model actual operations. This section defines scenarios A4 to D3. C3 Waste Treatment has no flows.

Phase	Operation	Type specified	Amount	Type specified	Amount
<b>A4 Transport</b>	Transport to Site	25t semi-trailer	60 km	85% Capacity	Full back load
	Long distance road	25t semi-trailer	600km	85% Capacity	Full back load
	Continental freight rail	Diesel train	600km	85% Capacity	Full back load
	Container shipping	Factory to CBD	1,200km	85% Capacity	Full back load
	Volume capacity (<1 ≥1)	Utilisation factor	1	Uncompressed	Un-nested
<b>A5 Construct</b>	Ancillaries	Adhesive	0.025kg	Edge trim	0.0001kg
	Packing	Cardboard	0.005kg	Polymer	0.00001kg
	Water & Energy	Town water	0.5litre	Grid power	0.0002 MJ
	Waste on site	Trims	0.05kg	All packaging	As shown kg
	Scrap collection & route	25t semi-trailer	60 km	to landfill	In LCA report
<b>B2 Maintain</b>	Emissions	Nil to air & water	0.0kg	All from landfill	In LCA report
	Maker's specification	URL Declared	Specified	Clean cycle	Weekly
	Ancillaries	Wipes	Negligible	Detergent	0.007kgpa
	Surface Washdown	Town water	1.95kgpa	Net to drain	1.90kgpa
	<b>B3 Repair</b>	Typical practice	Damaged parts	0.05kg	Worn parts
Maker's specification		As per website	Specified	Freight to site	As A5
Energy input & source		No excess	0.0MJpa	Packaging	As A5
<b>C1 Demolish</b>	Typical practice	Remove worn	0.05kg	Collect Separate	0.05kg
	Collection process	In site waste	0.40kg	Separate to reuse	0.0kg
<b>C2 Transport</b>	Typical practice	25t truck road	50km	85% capacity	No back load
<b>C3 Waste Treatment</b>	Typical practice	No waste treated	0.0kg	Not for energy	0.0kg
<b>C4 Dispose</b>	Typical practice	Product specific	0.05kg	Collect separately	0.05kg
	Typical practice	Worn to landfill	5%	All emissions	mass share
	Recovery system	No recycling	0.0kg	Not for energy	0.0kg
<b>D1 Reuse</b>	Typical practice	Reuse	95%	Patch 5%	0.05kg
<b>D2 Recover</b>	Typical practice	Recover	100%	Cleaning	sweep
<b>D3 Recycle</b>	None typically	At 60 years	Nil	None	0%



**Environmental Impact Terminology**

The United Nations reports only a few decades are left to resolve accelerating climate emergency and extinction crises. It is a call to action to all people to reverse the loss of climate and biodiversity security from human development in all activity [16]. Key environmental damages contributing to risks of ecological and community loss and collapse are tabled below with common names and remedies for each indicator.

<p><b>Climate change from anthropogenic infrared forced global warming</b></p>	<p>Greenhouse gases absorb infra-red radiation. This heat reduces thermal energy differentials, from equator to poles, forcing ocean current and wind circulation to blend and regulate climate. Weakly blended “lumpier” weather has more frequent, extreme heat wave, fire-storm, cyclone, rain-storm, flood and blizzard events. Accumulation of carbon dioxide, natural gas methane, nitrous oxides and volatile organic compounds from burning fossil fuels causes global warming. Forest and wilderness growth absorbing air-borne carbon in biomass can drawdown such accumulation. Urgent renewable energy reliance is vital in time to avoid imminent tipping points and the worsening “<i>climate emergency</i>”.</p>
<p><b>Ozone layer depletion</b></p>	<p>Stratospheric ozone loss weakens the planet’s solar shield so more shorter wavelength ultraviolet (UVB) light reaching earth damages plants and increases malignant melanoma and skin cancer in humans and animals. Chlorofluorocarbons, hydrochlorofluorocarbons (HCFC), hydrobromofluorocarbons, carbon tetrachloride, chlorobromomethane, methyl chloroform, methyl bromide and halon gas cause ozone layer loss. To repair the “<i>ozone hole</i>” reliance on ozone-safe refrigerants, aerosols and solvents is essential to avoid further its depletion and enable accumulation of naturally-formed ozone.</p>
<p><b>Acidification of air, land and waters</b></p>	<p>Acidification in the atmosphere reduces soil and waterway pH, impedes nitrogen fixation vital for plant growth and inhibits natural decomposition. It increases rates and incidence of fish kills, forest loss and deterioration of buildings and materials. Chief synthetic causes of “<i>acid rain</i>” are emissions of sulphur and nitrogen oxides, hydrochloric and hydrofluoric acids and ammonia from burning fossil fuels polluting precipitation of rain and snow world-wide.</p>
<p><b>Eutrophication of terrestrial, freshwater and marine life</b></p>	<p>Eutrophication from excessively high macronutrient levels added to natural waters promotes excessive plant growth that severely reduces oxygen, water and habitat security for aquatic and terrestrial organisms across related ecosystems. Chief synthetic cause of “<i>algal blooms</i>” is nitrogen (N, NO<sub>x</sub>, NH<sub>4</sub>) and phosphorus (P, PO<sub>4</sub><sup>3-</sup>) in rain run-off over-fertilised land catchments.</p>
<p><b>Photochemical ozone creation</b></p>	<p>Tropospheric photochemical ozone, called “<i>summer smog</i>” near ground level, is created from natural and synthetic compounds in UV sunlight. Low concentration smog damages vegetation and crops. High concentration smog is hazardous to human health. Chief synthetic causes are nitrogen oxides, carbon monoxide and volatile organic compounds (VOC) pollutants. Avoiding reliance on dirtiest coal fuel and volatile chemicals has reduced smog incidence in many areas globally.</p>
<p><b>Depletion of minerals, metals &amp; water</b></p>	<p>Abiotic depletion of finite mineral resources increases time, effort and money required to obtain more resources to the point of extinction of naturally viable reserves. This can limit access to available, valuable and scarce elements vital for human-life. The youth movement “<i>extinction rebellion</i>” calls on adults to secure climate, material reserves and biodiversity for current and future generations.</p>
<p><b>Depletion of fossil fuel reserves</b></p>	<p>Abiotic depletion of resources by consuming finite oil, natural gas, coal and yellowcake fossil fuel reserves leaves current and future generations suffering limited available, accessible, plentiful, essential valuable as well as scarce raw material, medicinal, chemical, feedstock and fuel stock. Approaching “<i>peak oil</i>” acknowledged fossil fuel reserves are finite and the need for decision-makers to act to avoid market instability, insecurity and or oil and gas wars.</p>



## Glossary of Impact Assessment Terms, Methods and Units

Acronyms, methods and units of impact potentials plus inventory inputs and outputs, are defined below

Impact Potentials	Acronym	Description of Methods	Units
Climate Change biogenic	GWP <sub>bio</sub>	GWP biogenic [7]	kg CO <sub>2eq</sub>
Climate Change luluc	GWP <sub>luluc</sub>	GWP land use & change [7]	kg CO <sub>2eq</sub>
Climate Change fossil	GWP <sub>ff</sub>	GWP fossil fuels [7]	kg CO <sub>2eq</sub>
Climate Change total	GWP <sub>t</sub>	Global Warming Potential [7]	kg CO <sub>2eq</sub>
Stratospheric Ozone Depletion	ODP	Stratospheric Ozone Loss [8]	kg CFC <sub>11eq</sub>
Photochemical Ozone Creation	POCP	Summer Smog [9]	kg NMOC <sub>eq</sub>
Acidification Potential	AP	Accumulated Exceedance [10]	mol H <sup>+</sup> <sub>eq</sub>
Eutrophication Freshwater	EP <sub>fresh</sub>	Excess nutrients freshwater [11]	kg P <sub>eq</sub>
Eutrophication Marine	EP <sub>marine</sub>	Excess marine nutrients [11]	kg N <sub>eq</sub>
Eutrophication Terrestrial	EP <sub>land</sub>	Excess Terrestrial nutrients [11]	mol N <sub>eq</sub>
Mineral & Metal Depletion	ADP <sub>min</sub>	Abiotic Depletion minerals [12]	kg Sb <sub>eq</sub>
Fossil Fuel Depletion	ADP <sub>ff</sub>	Abiotic Depletion fossil fuel [13]	MJ <sub>ncv</sub>
Water Depletion	WDP	Water Deprivation Scarcity [14,15]	m <sup>3</sup> WDP <sub>eq</sub>
Fresh Water Net	FW	Lake, river, well & town water	m <sup>3</sup>
Secondary Material	SM	Post-consumer recycled (PCR)	kg
Secondary Renewable Fuel	RSF	PCR biomass burnt	MJ <sub>ncv</sub>
Primary Energy Renewable Material	PERM	Biomass retained material	MJ <sub>ncv</sub>
Primary Energy Renewable Not Feedstock	PERE	biomass fuels burnt	MJ <sub>ncv</sub>
Primary Energy Renewable Total	PERT	Biomass burnt + retained	MJ <sub>ncv</sub>
Secondary Non-renewable Fuel	NRSF	PCR fossil-fuels burnt	MJ <sub>ncv</sub>
Primary Energy Non-renewable Material	PENRM	Fossil feedstock retained	MJ <sub>ncv</sub>
Primary Energy Non-renewable Not Feedstock	PENRE	fossil-fuel used or burnt	MJ <sub>ncv</sub>
Primary Energy Non-renewable Total	PENRT	Fossil feedstock & fuel use	MJ <sub>ncv</sub>
Hazardous Waste Disposed	HWD	Reprocessed to contain risks	kg
Non-hazardous Waste Disposed	NHWD	Municipal landfill facility waste	kg
Radioactive Waste Disposed	RWD	Mostly ex nuclear power stations	kg
Components For Reuse	CRU	Product scrap for reuse as is	kg
Material For Recycling	MFR	Factory scrap to remanufacture	kg
Material For Energy Recovery	MER	Factory scrap use as fuel	kg
Exported Energy Electrical	EEE	Uncommon for building products	MJ <sub>ncv</sub>
Exported Energy Thermal	EET	Uncommon for building products	MJ <sub>ncv</sub>





Natural Nuance and Chalk 0.7mm LGHP02 2023EP

Results Module A Cradle to Site

Table 1 shows results of A1 resourcing, A2 transport, A3 manufacture, A4 delivery and A5 construct.

Table 1 A1 to A5 Impact & Inventory Results/Functional Unit

Result	A1-3	A4	A5
Climate Change biogenic	-1.5	-1.1E-06	-7.5E-02
Climate Change luluc	6.0E-02	1.0E-09	2.8E-03
Climate Change fossil	9.6	1.9E-02	0.47
Climate Change total	8.2	1.9E-02	0.40
Stratospheric Ozone Depletion	1.3E-07	1.7E-13	9.1E-09
Photochemical Ozone Creation	4.6E-02	1.2E-04	2.1E-03
Acidification Potential	1.8E-02	1.2E-05	9.1E-04
Eutrophication Freshwater	2.9E-05	5.6E-10	1.9E-06
Eutrophication Marine	4.3E-03	2.3E-06	2.1E-04
Eutrophication Terrestrial	3.8E-02	7.7E-06	1.9E-03
Mineral and Metal Depletion	2.4E-03	7.2E-06	1.2E-04
Fossil Depletion	5.3	2.2E-02	0.26
Water Scarcity Depletion	9.8E-02	3.0E-06	4.4E-03
Net Fresh Water Use	0.60	1.8E-05	2.7E-02
Secondary Material	0.39	2.3E-06	2.7E-03
Secondary Renewable Fuel	28	6.8E-06	1.4
Primary Renewable Material	6.4E-02	3.0E-04	3.1E-03
Primary Energy Renewable Not Feedstock	6.4	2.4E-03	0.33
Primary Energy Renewable Total	35	2.7E-03	1.8
Secondary Non-renewable Fuel	0.21	7.4E-04	1.0E-02
Primary Energy Non-renewable Material	19	0.11	0.92
Primary Non-renewable Energy Not Feedstock	88	0.19	4.2
Primary Energy Non-renewable Total	107	0.30	5.2
Hazardous Waste Disposed	2.3E-03	3.7E-05	1.2E-04
Non-hazardous Waste Disposed	0.86	3.1E-04	4.1E-02
Radioactive Waste Disposed	2.4E-15	1.1E-31	1.1E-16
Components For Reuse	0	4.4E-3	0
Material For Recycling	8.1E-02	5.7E-06	6.0E-03
Material For Energy Recovery	2.8E-04	2.3E-07	2.1E-05
Exported Energy Electrical	0	0	0
Exported Energy Thermal	0	0	0



Natural Nuance and Chalk 0.7mm LGHP02 2023EP

Results Module B: Building Fabric and Operations

Table 2 shows results of B1 use, B2 maintain, B3 repair, B4 replace, B5 refurbish, B6 energy use and B7 water use.

Table 2 B1 to B7 Impact & Inventory Results/Functional Unit

Result	B1	B2	B3	B4	B5	B6	B7
Climate Change biogenic	0	-0.10	-7.5E-02	0	0	0	0
Climate Change luluc	0	6.5E-06	2.8E-03	0	0	0	0
Climate Change fossil	0	0.72	0.47	0	0	0	0
Climate Change total	0	0.62	0.40	0	0	0	0
Stratospheric Ozone Depletion	0	3.2E-09	9.1E-09	0	0	0	0
Photochemical Ozone Creation	0	3.0E-03	2.1E-03	0	0	0	0
Acidification Potential	0	1.3E03	9.1E-04	0	0	0	0
Eutrophication Freshwater	0	6.5E-07	1.9E-06	0	0	0	0
Eutrophication Marine	0	2.1E-04	2.1E-04	0	0	0	0
Eutrophication Terrestrial	0	1.5E-03	1.9E-03	0	0	0	0
Mineral and Metal Depletion	0	3.2E-04	1.2E-04	0	0	0	0
Fossil Depletion	0	0.52	0.26	0	0	0	0
Water Scarcity Depletion	0	1.1E-02	4.4E-03	0	0	0	0
Net Fresh Water Use	0	6.6E-02	2.7E-02	0	0	0	0
Secondary Material	0	2.7E-03	2.7E-03	0	0	0	0
Secondary Renewable Fuel	0	1.4	1.4	0	0	0	0
Primary Renewable Material	0	3.1E-03	3.1E-03	0	0	0	0
Primary Energy Renewable Not Feedstock	0	0.33	0.33	0	0	0	0
Primary Energy Renewable Total	0	1.8	1.8	0	0	0	0
Secondary Non-renewable Fuel	0	1.0E-02	1.0E-02	0	0	0	0
Primary Energy Non-renewable Material	0	0.92	0.92	0	0	0	0
Primary Non-renewable Energy Not Feedstock	0	4.2	4.2	0	0	0	0
Primary Energy Non-renewable Total	0	5.2	5.2	0	0	0	0
Hazardous Waste Disposed	0	9.9E-04	1.2E-04	0	0	0	0
Non-hazardous Waste Disposed	0	0.11	0.40	0	0	0	0
Radioactive Waste Disposed	0	2.7E-17	1.1E-16	0	0	0	0
Components For Reuse	0	0	0	0	0	0	0
Material For Recycling	0	7.6E-02	6.0E-03	0	0	0	0
Material For Energy Recovery	0	3.6E-05	2.1E-05	0	0	0	0
Exported Energy Electrical	0	0	0	0	0	0	0
Exported Energy Thermal	0	0	0	0	0	0	0



Natural Nuance and Chalk0.7mm LGHP02 2023EP

Results Module C: End-of-life

Table 3 shows results for C1 demolish, C2 transport C3 waste processing and C4 disposal.

Table 3 C1 to C4 Impact & Inventory Results/Functional Unit

Result	C1	C2	C3	C4
Climate Change biogenic	-7.0E-06	-5.4E-07	0	-3.4E-07
Climate Change luluc	1.0E-08	8.0E-10	0	5.1E-10
Climate Change fossil	1.9E-03	6.2E-03	0	6.1E-03
Climate Change total	1.9E-03	6.2E-03	0	6.1E-03
Stratospheric Ozone Depletion	2.3E-13	1.1E-13	0	8.8E-14
Photochemical Ozone Creation	7.6E-06	6.0E-05	0	1.4E-04
Acidification Potential	3.5E-06	5.1E-06	0	1.8E-05
Eutrophication Freshwater	7.3E-13	3.1E-10	0	2.6E-10
Eutrophication Marine	6.4E-07	9.4E-07	0	3.3E-06
Eutrophication Terrestrial	4.1E-06	3.2E-06	0	6.3E-06
Mineral and Metal Depletion	3.8E-09	4.2E-06	0	4.0E-06
Fossil Depletion	9.2E-04	7.5E-03	0	7.2E-03
Water Scarcity Depletion	2.5E-07	1.4E-06	0	1.2E-06
Net Fresh Water Use	1.5E-06	8.7E-06	0	7.5E-06
Secondary Material	1.5E-05	1.7E-06	0	1.2E-06
Secondary Renewable Fuel	7.4E-08	5.3E-17	0	3.3E-17
Primary Renewable Material	2.3E-03	2.9E-04	0	2.1E-04
Primary Energy Renewable Not Feedstock	1.4E-07	1.6E-03	0	1.3E-03
Primary Energy Renewable Total	2.3E-03	1.9E-03	0	1.5E-03
Secondary Non-renewable Fuel	1.4E-08	4.8E-04	0	3.9E-04
Primary Energy Non-renewable Material	2.0E-02	6.3E-02	0	6.0E-02
Primary Non-renewable Energy Not Feedstock	2.5E-04	3.7E-02	0	4.0E-02
Primary Energy Non-renewable Total	2.0E-02	0.10	0	0.10
Hazardous Waste Disposed	7.3E-08	1.2E-05	0	1.2E-05
Non-hazardous Waste Disposed	5.6E-06	9.6E-05	0	5.0E-02
Radioactive Waste Disposed	4.4E-21	8.5E-32	0	5.4E-32
Components For Reuse	0	0	0	0
Material For Recycling	2.2E-05	4.0E-06	0	3.0E-06
Material For Energy Recovery	2.9E-10	1.5E-07	0	1.2E-07
Exported Energy Electrical	0	0	0	0
Exported Energy Thermal	0	0	0	0



Natural Nuance and Chalk 0.7mm LGHP02 2023EP

Results Module D: Beyond System Boundaries

Table 4 has results for benefit and loads in D1 reuse, D3 recycling and D2 recovery.

Table 4 D1 to D3 Impact & Inventory Results/Functional Unit

Result	D1	D2	D3
Climate Change biogenic	-0.43	-1.8E-05	-1.3E-03
Climate Change luluc	-1.5E-02	1.8E-09	2.8E-03
Climate Change fossil	-2.8	2.5E-04	0.47
Climate Change total	-2.4	2.3E-04	0.40
Stratospheric Ozone Depletion	-3.4E-08	5.9E-13	9.1E-09
Photochemical Ozone Creation	-1.3E-02	1.0E-06	2.1E-03
Acidification Potential	-5.3E-03	4.4E-07	9.1E-04
Eutrophication Freshwater	-9.9E-06	1.2E-10	1.9E-06
Eutrophication Marine	-1.2E-03	7.7E-08	2.1E-04
Eutrophication Terrestrial	-1.1E-02	5.2E-07	1.9E-03
Mineral and Metal Depletion	-7.2E-04	5.8E-08	1.2E-04
Fossil Depletion	-1.6	1.5E-04	0.26
Water Scarcity Depletion	-2.5E-02	1.8E-05	4.4E-03
Net Fresh Water Use	-0.16	1.1E-04	2.7E-02
Secondary Material	-7.4E-03	0	2.7E-03
Secondary Renewable Fuel	-8.0	1.7E-04	1.8E-03
Primary Renewable Material	-1.7	2.7E-04	0.20
Primary Energy Renewable Not Feedstock	-6.7E-02	3.0E-05	4.3E-03
Primary Energy Renewable Total	-10.0	4.7E-04	0.21
Secondary Non-renewable Fuel	-8.0E-02	7.7E-06	1.5E-03
Primary Energy Non-renewable Material	-26	2.4E-03	1.9
Primary Non-renewable Energy Not Feedstock	-6.0	3.2E-04	0.14
Primary Energy Non-renewable Total	-32	2.7E-03	2.0
Hazardous Waste Disposed	-1.0E-03	1.9E-07	1.2E-04
Non-hazardous Waste Disposed	-6.1E-02	2.0E-05	4.1E-02
Radioactive Waste Disposed	-6.0E-16	4.9E-21	1.1E-16
Components For Reuse	0	0	0
Material For Recycling	-4.9E-02	1.5E-05	6.0E-03
Material For Energy Recovery	-8.3E-05	6.5E-09	2.1E-05
Exported Energy Electrical	0	0	0
Exported Energy Thermal	0	0	0



**Absolute Matte LGHP01 2023EP**

**Results Module A Cradle to Site**

Table 5 shows results of A1 resourcing, A2 transport, A3 manufacture, A4 delivery and A5 construct.

**Table 5 A1 to A5 Impact & Inventory Results/Functional Unit**

Result	A1-3	A4	A5
Climate Change biogenic	-1.3	-1.1E-06	-7.5E-02
Climate Change luluc	5.5E-02	1.0E-09	2.8E-03
Climate Change fossil	9.8	1.9E-02	0.47
Climate Change total	8.6	1.9E-02	0.40
Stratospheric Ozone Depletion	1.3E-07	1.7E-13	9.1E-09
Photochemical Ozone Creation	4.6E-02	1.2E-04	2.1E-03
Acidification Potential	2.0E-02	1.2E-05	9.1E-04
Eutrophication Freshwater	3.4E-05	5.6E-10	1.9E-06
Eutrophication Marine	4.4E-03	2.3E-06	2.1E-04
Eutrophication Terrestrial	3.9E-02	7.7E-06	1.9E-03
Mineral and Metal Depletion	3.9E-03	7.2E-06	1.2E-04
Fossil Depletion	5.7	2.2E-02	0.26
Water Scarcity Depletion	9.0E-02	3.0E-06	4.4E-03
Net Fresh Water Use	0.56	1.8E-05	2.7E-02
Secondary Material	0.33	2.3E-06	2.7E-03
Secondary Renewable Fuel	26	6.8E-06	1.4
Primary Renewable Material	4.8E-02	3.0E-04	3.1E-03
Primary Energy Renewable Not Feedstock	6.1	2.4E-03	0.33
Primary Energy Renewable Total	32	2.7E-03	1.8
Secondary Non-renewable Fuel	0.71	7.4E-04	1.0E-02
Primary Energy Non-renewable Material	25	0.11	0.92
Primary Non-renewable Energy Not Feedstock	92	0.19	4.2
Primary Energy Non-renewable Total	116	0.30	5.2
Hazardous Waste Disposed	3.5E-03	3.7E-05	1.2E-04
Non-hazardous Waste Disposed	0.84	3.1E-04	4.1E-02
Radioactive Waste Disposed	2.1E-15	1.1E-31	1.1E-16
Components For Reuse	0	4.4E-3	0
Material For Recycling	8.2E-02	5.7E-06	6.0E-03
Material For Energy Recovery	1.1E-03	2.3E-07	2.1E-05
Exported Energy Electrical	0	0	0
Exported Energy Thermal	0	0	0



**Absolute Matte LGHP01 2023EP**

**Results Module B: Building Fabric and Operations**

Table 6 shows results of B1 use, B2 maintain, B3 repair, B4 replace, B5 refurbish, B6 energy use and B7 water use.

**Table 6 B1 to B7 Impact & Inventory Results/Functional Unit**

Result	B1	B2	B3	B4	B5	B6	B7
Climate Change biogenic	0	-0.10	-7.5E-02	0	0	0	0
Climate Change luluc	0	6.5E-06	2.8E-03	0	0	0	0
Climate Change fossil	0	0.72	0.47	0	0	0	0
Climate Change total	0	0.62	0.40	0	0	0	0
Stratospheric Ozone Depletion	0	3.2E-09	9.1E-09	0	0	0	0
Photochemical Ozone Creation	0	3.0E-03	2.1E-03	0	0	0	0
Acidification Potential	0	1.3E03	9.1E-04	0	0	0	0
Eutrophication Freshwater	0	6.5E-07	1.9E-06	0	0	0	0
Eutrophication Marine	0	2.1E-04	2.1E-04	0	0	0	0
Eutrophication Terrestrial	0	1.5E-03	1.9E-03	0	0	0	0
Mineral and Metal Depletion	0	3.2E-04	1.2E-04	0	0	0	0
Fossil Depletion	0	0.52	0.26	0	0	0	0
Water Scarcity Depletion	0	1.1E-02	4.4E-03	0	0	0	0
Net Fresh Water Use	0	6.6E-02	2.7E-02	0	0	0	0
Secondary Material	0	2.7E-03	2.7E-03	0	0	0	0
Secondary Renewable Fuel	0	1.4	1.4	0	0	0	0
Primary Renewable Material	0	3.1E-03	3.1E-03	0	0	0	0
Primary Energy Renewable Not Feedstock	0	0.33	0.33	0	0	0	0
Primary Energy Renewable Total	0	1.8	1.8	0	0	0	0
Secondary Non-renewable Fuel	0	1.0E-02	1.0E-02	0	0	0	0
Primary Energy Non-renewable Material	0	0.92	0.92	0	0	0	0
Primary Non-renewable Energy Not Feedstock	0	4.2	4.2	0	0	0	0
Primary Energy Non-renewable Total	0	5.2	5.2	0	0	0	0
Hazardous Waste Disposed	0	9.9E-04	1.2E-04	0	0	0	0
Non-hazardous Waste Disposed	0	0.11	0.40	0	0	0	0
Radioactive Waste Disposed	0	2.7E-17	1.1E-16	0	0	0	0
Components For Reuse	0	0	0	0	0	0	0
Material For Recycling	0	7.6E-02	6.0E-03	0	0	0	0
Material For Energy Recovery	0	3.6E-05	2.1E-05	0	0	0	0
Exported Energy Electrical	0	0	0	0	0	0	0
Exported Energy Thermal	0	0	0	0	0	0	0



**Results Module C: End-of-life**

Table 7 shows results for C1 demolish, C2 transport C3 waste processing and C4 disposal.

**Table 7 C1 to C4 Impact & Inventory Results/Functional Unit**

Result	C1	C2	C3	C4
Climate Change biogenic	-7.0E-06	-5.4E-07	0	-3.4E-07
Climate Change luluc	1.0E-08	8.0E-10	0	5.1E-10
Climate Change fossil	1.9E-03	6.2E-03	0	6.1E-03
Climate Change total	1.9E-03	6.2E-03	0	6.1E-03
Stratospheric Ozone Depletion	2.3E-13	1.1E-13	0	8.8E-14
Photochemical Ozone Creation	7.6E-06	6.0E-05	0	1.4E-04
Acidification Potential	3.5E-06	5.1E-06	0	1.8E-05
Eutrophication Freshwater	7.3E-13	3.1E-10	0	2.6E-10
Eutrophication Marine	6.4E-07	9.4E-07	0	3.3E-06
Eutrophication Terrestrial	4.1E-06	3.2E-06	0	6.3E-06
Mineral and Metal Depletion	3.8E-09	4.2E-06	0	4.0E-06
Fossil Depletion	9.2E-04	7.5E-03	0	7.2E-03
Water Scarcity Depletion	2.5E-07	1.4E-06	0	1.2E-06
Net Fresh Water Use	1.5E-06	8.7E-06	0	7.5E-06
Secondary Material	1.5E-05	1.7E-06	0	1.2E-06
Secondary Renewable Fuel	7.4E-08	5.3E-17	0	3.3E-17
Primary Renewable Material	2.3E-03	2.9E-04	0	2.1E-04
Primary Energy Renewable Not Feedstock	1.4E-07	1.6E-03	0	1.3E-03
Primary Energy Renewable Total	2.3E-03	1.9E-03	0	1.5E-03
Secondary Non-renewable Fuel	1.4E-08	4.8E-04	0	3.9E-04
Primary Energy Non-renewable Material	2.0E-02	6.3E-02	0	6.0E-02
Primary Non-renewable Energy Not Feedstock	2.5E-04	3.7E-02	0	4.0E-02
Primary Energy Non-renewable Total	2.0E-02	0.10	0	0.10
Hazardous Waste Disposed	7.3E-08	1.2E-05	0	1.2E-05
Non-hazardous Waste Disposed	5.6E-06	9.6E-05	0	5.0E-02
Radioactive Waste Disposed	4.4E-21	8.5E-32	0	5.4E-32
Components For Reuse	0	0	0	0
Material For Recycling	2.2E-05	4.0E-06	0	3.0E-06
Material For Energy Recovery	2.9E-10	1.5E-07	0	1.2E-07
Exported Energy Electrical	0	0	0	0
Exported Energy Thermal	0	0	0	0



**Absolute Matte LGHP01 2023EP**

**Results Module D: Beyond System Boundaries**

Table 8 has results for benefit and loads in D1 reuse, D3 recycling and D2 recovery.

**Table 8 D1 to D3 Impact & Inventory Results/Functional Unit**

Result	D1	D2	D3
Climate Change biogenic	-0.43	-1.8E-05	-1.3E-03
Climate Change luluc	-1.5E-02	1.8E-09	2.8E-03
Climate Change fossil	-2.8	2.5E-04	0.47
Climate Change total	-2.4	2.3E-04	0.40
Stratospheric Ozone Depletion	-3.4E-08	5.9E-13	9.1E-09
Photochemical Ozone Creation	-1.3E-02	1.0E-06	2.1E-03
Acidification Potential	-5.3E-03	4.4E-07	9.1E-04
Eutrophication Freshwater	-9.9E-06	1.2E-10	1.9E-06
Eutrophication Marine	-1.2E-03	7.7E-08	2.1E-04
Eutrophication Terrestrial	-1.1E-02	5.2E-07	1.9E-03
Mineral and Metal Depletion	-7.2E-04	5.8E-08	1.2E-04
Fossil Depletion	-1.6	1.5E-04	0.26
Water Scarcity Depletion	-2.5E-02	1.8E-05	4.4E-03
Net Fresh Water Use	-0.16	1.1E-04	2.7E-02
Secondary Material	-7.4E-03	0	2.7E-03
Secondary Renewable Fuel	-8.0	1.7E-04	1.8E-03
Primary Renewable Material	-1.7	2.7E-04	0.20
Primary Energy Renewable Not Feedstock	-6.7E-02	3.0E-05	4.3E-03
Primary Energy Renewable Total	-10.0	4.7E-04	0.21
Secondary Non-renewable Fuel	-8.0E-02	7.7E-06	1.5E-03
Primary Energy Non-renewable Material	-26	2.4E-03	1.9
Primary Non-renewable Energy Not Feedstock	-6.0	3.2E-04	0.14
Primary Energy Non-renewable Total	-32	2.7E-03	2.0
Hazardous Waste Disposed	-1.0E-03	1.9E-07	1.2E-04
Non-hazardous Waste Disposed	-6.1E-02	2.0E-05	4.1E-02
Radioactive Waste Disposed	-6.0E-16	4.9E-21	1.1E-16
Components For Reuse	0	0	0
Material For Recycling	-4.9E-02	1.5E-05	6.0E-03
Material For Energy Recovery	-8.3E-05	6.5E-09	2.1E-05
Exported Energy Electrical	0	0	0
Exported Energy Thermal	0	0	0





**Results Module A: Cradle to Site**

Table 9 shows results of A1 resourcing, A2 transport, A3 manufacture, A4 delivery and A5 construct.

**Table 9 A1 to A5 Impact & Inventory Results/Functional Unit**

Result	A1-3	A4	A5
Climate Change biogenic	-1.4	-1.1E-06	-7.5E-02
Climate Change luluc	5.9E-02	1.0E-09	2.8E-03
Climate Change fossil	9.2	1.9E-02	0.47
Climate Change total	7.8	1.9E-02	0.40
Stratospheric Ozone Depletion	1.2E-07	1.7E-13	9.1E-09
Photochemical Ozone Creation	4.0E-02	1.2E-04	2.1E-03
Acidification Potential	1.8E-02	1.2E-05	9.1E-04
Eutrophication Freshwater	2.9E-05	5.6E-10	1.9E-06
Eutrophication Marine	4.2E-03	2.3E-06	2.1E-04
Eutrophication Terrestrial	3.8E-02	7.7E-06	1.9E-03
Mineral and Metal Depletion	2.3E-03	7.2E-06	1.2E-04
Fossil Depletion	5.0	2.2E-02	0.26
Water Scarcity Depletion	9.0E-02	3.0E-06	4.4E-03
Net Fresh Water Use	0.56	1.8E-05	2.7E-02
Secondary Material	0.35	2.3E-06	2.7E-03
Secondary Renewable Fuel	28	6.8E-06	1.4
Primary Renewable Material	6.4E-02	3.0E-04	3.1E-03
Primary Energy Renewable Not Feedstock	6.2	2.4E-03	0.33
Primary Energy Renewable Total	34	2.7E-03	1.8
Secondary Non-renewable Fuel	0.20	7.4E-04	1.0E-02
Primary Energy Non-renewable Material	17	0.11	0.92
Primary Non-renewable Energy Not Feedstock	85	0.19	4.2
Primary Energy Non-renewable Total	103	0.30	5.2
Hazardous Waste Disposed	8.0E-02	3.7E-05	1.2E-04
Non-hazardous Waste Disposed	2.3E-15	3.1E-04	4.1E-02
Radioactive Waste Disposed	2.2E-03	1.1E-31	1.1E-16
Components For Reuse	0	4.4E-3	0
Material For Recycling	8.1E-02	5.7E-06	6.0E-03
Material For Energy Recovery	1.9E-04	2.3E-07	2.1E-05
Exported Energy Electrical	0	0	0
Exported Energy Thermal	0	0	0



**Results Module B: Building Fabric and Operations**

Table 10 shows results of B1 use, B2 maintain, B3 repair, B4 replace, B5 refurbish, B6 energy use and B7 water use.

**Table 10 B1 to B7 Impact & Inventory Results/Functional Unit**

Result	B1	B2	B3	B4	B5	B6	B7
Climate Change biogenic	0	-0.10	-7.5E-02	0	0	0	0
Climate Change luluc	0	6.5E-06	2.8E-03	0	0	0	0
Climate Change fossil	0	0.72	0.47	0	0	0	0
Climate Change total	0	0.62	0.40	0	0	0	0
Stratospheric Ozone Depletion	0	3.2E-09	9.1E-09	0	0	0	0
Photochemical Ozone Creation	0	3.0E-03	2.1E-03	0	0	0	0
Acidification Potential	0	1.3E03	9.1E-04	0	0	0	0
Eutrophication Freshwater	0	6.5E-07	1.9E-06	0	0	0	0
Eutrophication Marine	0	2.1E-04	2.1E-04	0	0	0	0
Eutrophication Terrestrial	0	1.5E-03	1.9E-03	0	0	0	0
Mineral and Metal Depletion	0	3.2E-04	1.2E-04	0	0	0	0
Fossil Depletion	0	0.52	0.26	0	0	0	0
Water Scarcity Depletion	0	1.1E-02	4.4E-03	0	0	0	0
Net Fresh Water Use	0	6.6E-02	2.7E-02	0	0	0	0
Secondary Material	0	2.7E-03	2.7E-03	0	0	0	0
Secondary Renewable Fuel	0	1.4	1.4	0	0	0	0
Primary Renewable Material	0	3.1E-03	3.1E-03	0	0	0	0
Primary Energy Renewable Not Feedstock	0	0.33	0.33	0	0	0	0
Primary Energy Renewable Total	0	1.8	1.8	0	0	0	0
Secondary Non-renewable Fuel	0	1.0E-02	1.0E-02	0	0	0	0
Primary Energy Non-renewable Material	0	0.92	0.92	0	0	0	0
Primary Non-renewable Energy Not Feedstock	0	4.2	4.2	0	0	0	0
Primary Energy Non-renewable Total	0	5.2	5.2	0	0	0	0
Hazardous Waste Disposed	0	9.9E-04	1.2E-04	0	0	0	0
Non-hazardous Waste Disposed	0	0.11	0.40	0	0	0	0
Radioactive Waste Disposed	0	2.7E-17	1.1E-16	0	0	0	0
Components For Reuse	0	0	0	0	0	0	0
Material For Recycling	0	7.6E-02	6.0E-03	0	0	0	0
Material For Energy Recovery	0	3.6E-05	2.1E-05	0	0	0	0
Exported Energy Electrical	0	0	0	0	0	0	0
Exported Energy Thermal	0	0	0	0	0	0	0



**Results Module C: End-of-life**

Table 11 shows results for C1 demolish, C2 transport C3 waste processing and C4 disposal.

**Table 11 C1 to C4 Impact & Inventory Results/Functional Unit**

Result	C1	C2	C3	C4
Climate Change biogenic	-7.0E-06	-5.4E-07	0	-3.4E-07
Climate Change luluc	1.0E-08	8.0E-10	0	5.1E-10
Climate Change fossil	1.9E-03	6.2E-03	0	6.1E-03
Climate Change total	1.9E-03	6.2E-03	0	6.1E-03
Stratospheric Ozone Depletion	2.3E-13	1.1E-13	0	8.8E-14
Photochemical Ozone Creation	7.6E-06	6.0E-05	0	1.4E-04
Acidification Potential	3.5E-06	5.1E-06	0	1.8E-05
Eutrophication Freshwater	7.3E-13	3.1E-10	0	2.6E-10
Eutrophication Marine	6.4E-07	9.4E-07	0	3.3E-06
Eutrophication Terrestrial	4.1E-06	3.2E-06	0	6.3E-06
Mineral and Metal Depletion	3.8E-09	4.2E-06	0	4.0E-06
Fossil Depletion	9.2E-04	7.5E-03	0	7.2E-03
Water Scarcity Depletion	2.5E-07	1.4E-06	0	1.2E-06
Net Fresh Water Use	1.5E-06	8.7E-06	0	7.5E-06
Secondary Material	1.5E-05	1.7E-06	0	1.2E-06
Secondary Renewable Fuel	7.4E-08	5.3E-17	0	3.3E-17
Primary Renewable Material	2.3E-03	2.9E-04	0	2.1E-04
Primary Energy Renewable Not Feedstock	1.4E-07	1.6E-03	0	1.3E-03
Primary Energy Renewable Total	2.3E-03	1.9E-03	0	1.5E-03
Secondary Non-renewable Fuel	1.4E-08	4.8E-04	0	3.9E-04
Primary Energy Non-renewable Material	2.0E-02	6.3E-02	0	6.0E-02
Primary Non-renewable Energy Not Feedstock	2.5E-04	3.7E-02	0	4.0E-02
Primary Energy Non-renewable Total	2.0E-02	0.10	0	0.10
Hazardous Waste Disposed	7.3E-08	1.2E-05	0	1.2E-05
Non-hazardous Waste Disposed	5.6E-06	9.6E-05	0	5.0E-02
Radioactive Waste Disposed	4.4E-21	8.5E-32	0	5.4E-32
Components For Reuse	0	0	0	0
Material For Recycling	2.2E-05	4.0E-06	0	3.0E-06
Material For Energy Recovery	2.9E-10	1.5E-07	0	1.2E-07
Exported Energy Electrical	0	0	0	0
Exported Energy Thermal	0	0	0	0



**Results Module D: Beyond System Boundaries**

Table 12 has results for benefit and loads in D1 reuse, D3 recycling and D2 recovery.

**Table 12 D1 to D3 Impact & Inventory Results/Functional Unit**

Result	D1	D2	D3
Climate Change biogenic	-0.43	-1.8E-05	-1.3E-03
Climate Change luluc	-1.5E-02	1.8E-09	2.8E-03
Climate Change fossil	-2.8	2.5E-04	0.47
Climate Change total	-2.4	2.3E-04	0.40
Stratospheric Ozone Depletion	-3.4E-08	5.9E-13	9.1E-09
Photochemical Ozone Creation	-1.3E-02	1.0E-06	2.1E-03
Acidification Potential	-5.3E-03	4.4E-07	9.1E-04
Eutrophication Freshwater	-9.9E-06	1.2E-10	1.9E-06
Eutrophication Marine	-1.2E-03	7.7E-08	2.1E-04
Eutrophication Terrestrial	-1.1E-02	5.2E-07	1.9E-03
Mineral and Metal Depletion	-7.2E-04	5.8E-08	1.2E-04
Fossil Depletion	-1.6	1.5E-04	0.26
Water Scarcity Depletion	-2.5E-02	1.8E-05	4.4E-03
Net Fresh Water Use	-0.16	1.1E-04	2.7E-02
Secondary Material	-7.4E-03	0	2.7E-03
Secondary Renewable Fuel	-8.0	1.7E-04	1.8E-03
Primary Renewable Material	-1.7	2.7E-04	0.20
Primary Energy Renewable Not Feedstock	-6.7E-02	3.0E-05	4.3E-03
Primary Energy Renewable Total	-10.0	4.7E-04	0.21
Secondary Non-renewable Fuel	-8.0E-02	7.7E-06	1.5E-03
Primary Energy Non-renewable Material	-26	2.4E-03	1.9
Primary Non-renewable Energy Not Feedstock	-6.0	3.2E-04	0.14
Primary Energy Non-renewable Total	-32	2.7E-03	2.0
Hazardous Waste Disposed	-1.0E-03	1.9E-07	1.2E-04
Non-hazardous Waste Disposed	-6.1E-02	2.0E-05	4.1E-02
Radioactive Waste Disposed	-6.0E-16	4.9E-21	1.1E-16
Components For Reuse	0	0	0
Material For Recycling	-4.9E-02	1.5E-05	6.0E-03
Material For Energy Recovery	-8.3E-05	6.5E-09	2.1E-05
Exported Energy Electrical	0	0	0
Exported Energy Thermal	0	0	0



Impressions Natural, Nuance & Chalk 0.7mm LGHP06 2023EP

Results Module A Cradle to Site

Table 13 shows results of A1 resourcing, A2 transport, A3 manufacture, A4 delivery and A5 construct.

Table 13 A1 to A5 Impact & Inventory Results/Functional Unit

Result	A1-3	A4	A5
Climate Change biogenic	-1.5	-1.1E-06	-7.5E-02
Climate Change luluc	6.2E-02	1.0E-09	2.8E-03
Climate Change fossil	9.7	1.9E-02	0.47
Climate Change total	8.3	1.9E-02	0.40
Stratospheric Ozone Depletion	1.3E-07	1.7E-13	9.1E-09
Photochemical Ozone Creation	4.7E-02	1.2E-04	2.1E-03
Acidification Potential	1.9E-02	1.2E-05	9.1E-04
Eutrophication Freshwater	3.0E-05	5.6E-10	1.9E-06
Eutrophication Marine	4.4E-03	2.3E-06	2.1E-04
Eutrophication Terrestrial	3.9E-02	7.7E-06	1.9E-03
Mineral and Metal Depletion	2.5E-03	7.2E-06	1.2E-04
Fossil Depletion	5.3	2.2E-02	0.26
Water Scarcity Depletion	1.0E-01	3.0E-06	4.4E-03
Net Fresh Water Use	0.62	1.8E-05	2.7E-02
Secondary Material	0.40	2.3E-06	2.7E-03
Secondary Renewable Fuel	29	6.8E-06	1.4
Primary Renewable Material	6.6E-02	3.0E-04	3.1E-03
Primary Energy Renewable Not Feedstock	6.6	2.4E-03	0.33
Primary Energy Renewable Total	36	2.7E-03	1.8
Secondary Non-renewable Fuel	0.22	7.4E-04	1.0E-02
Primary Energy Non-renewable Material	19	0.11	0.92
Primary Non-renewable Energy Not Feedstock	89	0.19	4.2
Primary Energy Non-renewable Total	108	0.30	5.2
Hazardous Waste Disposed	2.4E-03	3.7E-05	1.2E-04
Non-hazardous Waste Disposed	0.86	3.1E-04	4.1E-02
Radioactive Waste Disposed	2.4E-15	1.1E-31	1.1E-16
Components For Reuse	0	4.4E-3	0
Material For Recycling	8.1E-02	5.7E-06	6.0E-03
Material For Energy Recovery	1.2E-02	2.3E-07	2.1E-05
Exported Energy Electrical	0	0	0
Exported Energy Thermal	0	0	0



Impressions Natural, Nuance & Chalk 0.7mm LGHP06 2023EP

Results Module B: Building Fabric and Operations

Table 14 shows results of B1 use, B2 maintain, B3 repair, B4 replace, B5 refurbish, B6 energy use and B7 water use.

Table 14 B1 to B7 Impact & Inventory Results/Functional Unit

Result	B1	B2	B3	B4	B5	B6	B7
Climate Change biogenic	0	-0.10	-7.5E-02	0	0	0	0
Climate Change luluc	0	6.5E-06	2.8E-03	0	0	0	0
Climate Change fossil	0	0.72	0.47	0	0	0	0
Climate Change total	0	0.62	0.40	0	0	0	0
Stratospheric Ozone Depletion	0	3.2E-09	9.1E-09	0	0	0	0
Photochemical Ozone Creation	0	3.0E-03	2.1E-03	0	0	0	0
Acidification Potential	0	1.3E03	9.1E-04	0	0	0	0
Eutrophication Freshwater	0	6.5E-07	1.9E-06	0	0	0	0
Eutrophication Marine	0	2.1E-04	2.1E-04	0	0	0	0
Eutrophication Terrestrial	0	1.5E-03	1.9E-03	0	0	0	0
Mineral and Metal Depletion	0	3.2E-04	1.2E-04	0	0	0	0
Fossil Depletion	0	0.52	0.26	0	0	0	0
Water Scarcity Depletion	0	1.1E-02	4.4E-03	0	0	0	0
Net Fresh Water Use	0	6.6E-02	2.7E-02	0	0	0	0
Secondary Material	0	2.7E-03	2.7E-03	0	0	0	0
Secondary Renewable Fuel	0	1.4	1.4	0	0	0	0
Primary Renewable Material	0	3.1E-03	3.1E-03	0	0	0	0
Primary Energy Renewable Not Feedstock	0	0.33	0.33	0	0	0	0
Primary Energy Renewable Total	0	1.8	1.8	0	0	0	0
Secondary Non-renewable Fuel	0	1.0E-02	1.0E-02	0	0	0	0
Primary Energy Non-renewable Material	0	0.92	0.92	0	0	0	0
Primary Non-renewable Energy Not Feedstock	0	4.2	4.2	0	0	0	0
Primary Energy Non-renewable Total	0	5.2	5.2	0	0	0	0
Hazardous Waste Disposed	0	9.9E-04	1.2E-04	0	0	0	0
Non-hazardous Waste Disposed	0	0.11	0.40	0	0	0	0
Radioactive Waste Disposed	0	2.7E-17	1.1E-16	0	0	0	0
Components For Reuse	0	0	0	0	0	0	0
Material For Recycling	0	7.6E-02	6.0E-03	0	0	0	0
Material For Energy Recovery	0	3.6E-05	2.1E-05	0	0	0	0
Exported Energy Electrical	0	0	0	0	0	0	0
Exported Energy Thermal	0	0	0	0	0	0	0



Impressions Natural, Nuance & Chalk 0.7mm LGHP06 2023EP

Results Module C: End-of-life

Table 15 shows results for C1 demolish, C2 transport C3 waste processing and C4 disposal.

Table 15 C1 to C4 Impact & Inventory Results/Functional Unit

Result	C1	C2	C3	C4
Climate Change biogenic	-7.0E-06	-5.4E-07	0	-3.4E-07
Climate Change luluc	1.0E-08	8.0E-10	0	5.1E-10
Climate Change fossil	1.9E-03	6.2E-03	0	6.1E-03
Climate Change total	1.9E-03	6.2E-03	0	6.1E-03
Stratospheric Ozone Depletion	2.3E-13	1.1E-13	0	8.8E-14
Photochemical Ozone Creation	7.6E-06	6.0E-05	0	1.4E-04
Acidification Potential	3.5E-06	5.1E-06	0	1.8E-05
Eutrophication Freshwater	7.3E-13	3.1E-10	0	2.6E-10
Eutrophication Marine	6.4E-07	9.4E-07	0	3.3E-06
Eutrophication Terrestrial	4.1E-06	3.2E-06	0	6.3E-06
Mineral and Metal Depletion	3.8E-09	4.2E-06	0	4.0E-06
Fossil Depletion	9.2E-04	7.5E-03	0	7.2E-03
Water Scarcity Depletion	2.5E-07	1.4E-06	0	1.2E-06
Net Fresh Water Use	1.5E-06	8.7E-06	0	7.5E-06
Secondary Material	1.5E-05	1.7E-06	0	1.2E-06
Secondary Renewable Fuel	7.4E-08	-5.3E-17	0	3.3E-17
Primary Renewable Material	2.3E-03	2.9E-04	0	2.1E-04
Primary Energy Renewable Not Feedstock	1.4E-07	1.6E-03	0	1.3E-03
Primary Energy Renewable Total	2.3E-03	1.9E-03	0	1.5E-03
Secondary Non-renewable Fuel	1.4E-08	4.8E-04	0	3.9E-04
Primary Energy Non-renewable Material	2.0E-02	6.3E-02	0	6.0E-02
Primary Non-renewable Energy Not Feedstock	2.5E-04	3.7E-02	0	4.0E-02
Primary Energy Non-renewable Total	2.0E-02	0.10	0	0.10
Hazardous Waste Disposed	7.3E-08	1.2E-05	0	1.2E-05
Non-hazardous Waste Disposed	5.6E-06	9.6E-05	0	5.0E-02
Radioactive Waste Disposed	4.4E-21	8.5E-32	0	5.4E-32
Components For Reuse	0	0	0	0
Material For Recycling	2.2E-05	4.0E-06	0	3.0E-06
Material For Energy Recovery	2.9E-10	1.5E-07	0	1.2E-07
Exported Energy Electrical	0	0	0	0
Exported Energy Thermal	0	0	0	0



Impressions Natural, Nuance & Chalk 0.7mm LGHP06 2023EP

Results Module D: Beyond System Boundaries

Table 16 has results for benefit and loads in D1 reuse, D3 recycling and D2 recovery.

Table 16 D1 to D3 Impact & Inventory Results/Functional Unit

Result	D1	D2	D3
Climate Change biogenic	-0.43	-1.8E-05	-1.3E-03
Climate Change luluc	-1.5E-02	1.8E-09	2.8E-03
Climate Change fossil	-2.8	2.5E-04	0.47
Climate Change total	-2.4	2.3E-04	0.40
Stratospheric Ozone Depletion	-3.4E-08	5.9E-13	9.1E-09
Photochemical Ozone Creation	-1.3E-02	1.0E-06	2.1E-03
Acidification Potential	-5.3E-03	4.4E-07	9.1E-04
Eutrophication Freshwater	-9.9E-06	1.2E-10	1.9E-06
Eutrophication Marine	-1.2E-03	7.7E-08	2.1E-04
Eutrophication Terrestrial	-1.1E-02	5.2E-07	1.9E-03
Mineral and Metal Depletion	-7.2E-04	5.8E-08	1.2E-04
Fossil Depletion	-1.6	1.5E-04	0.26
Water Scarcity Depletion	-2.5E-02	1.8E-05	4.4E-03
Net Fresh Water Use	-0.16	1.1E-04	2.7E-02
Secondary Material	-7.4E-03	0	2.7E-03
Secondary Renewable Fuel	-8.0	1.7E-04	1.8E-03
Primary Renewable Material	-1.7	2.7E-04	0.20
Primary Energy Renewable Not Feedstock	-6.7E-02	3.0E-05	4.3E-03
Primary Energy Renewable Total	-10.0	4.7E-04	0.21
Secondary Non-renewable Fuel	-8.0E-02	7.7E-06	1.5E-03
Primary Energy Non-renewable Material	-26	2.4E-03	1.9
Primary Non-renewable Energy Not Feedstock	-6.0	3.2E-04	0.14
Primary Energy Non-renewable Total	-32	2.7E-03	2.0
Hazardous Waste Disposed	-1.0E-03	1.9E-07	1.2E-04
Non-hazardous Waste Disposed	-6.1E-02	2.0E-05	4.1E-02
Radioactive Waste Disposed	-6.0E-16	4.9E-21	1.1E-16
Components For Reuse	0	0	0
Material For Recycling	-4.9E-02	1.5E-05	6.0E-03
Material For Energy Recovery	-8.3E-05	6.5E-09	2.1E-05
Exported Energy Electrical	0	0	0
Exported Energy Thermal	0	0	0

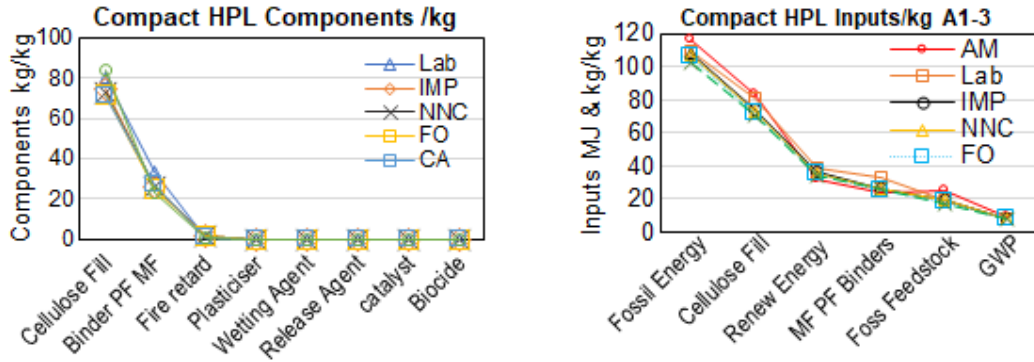




**Interpretation Cradle to Gate A1 to A3**

The first interpretation section discusses Compact High Pressure Laminate results cradle to gate A1 to A3. Their names are Formica Velour (FO), Natural Nuance Chalk (NNC), Absolute Matte (AM), Chemical Resistant (Lab), CustomArt® (CA) and Natural Nuance Chalk Impressions (IMP)

Figure 3 charts their component mass kg/kg product A1-3. Figure 4 charts energy and feedstock input (MJ), versus filler, binder and greenhouse emissions (GWP) (kg)/kg product A1-3.



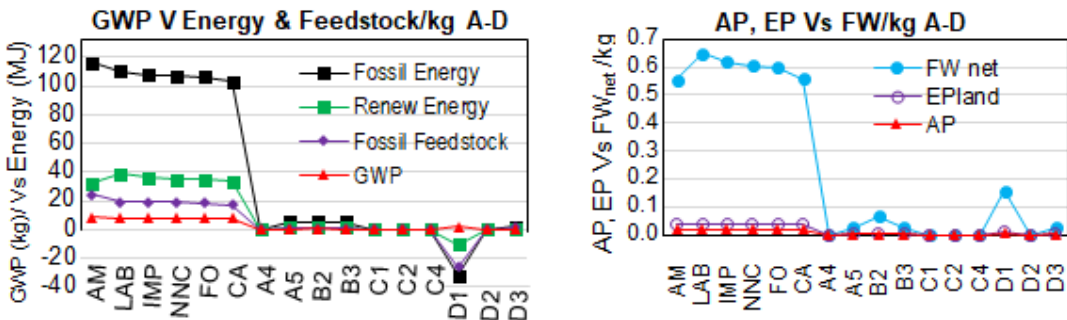
**Figure 3 Material Component Share kg/kg      Figure 4 Input Share (MJ & kg) Vs CO<sub>2e</sub> kg/kg**

Figure 3 shows cellulose filler and binders of Phenol or Melamine Formaldehyde (PF or MF) were the main components with others having very low mass share. Figure 4 shows reliance on fossil energy then renewable energy use then fossil feedstock compared to reliance on cellulose fill and formaldehyde binders versus low GWP. Renewable cellulose feedstock fill and renewable energy use reduced GWP.

**Interpretation Cradle to Grave and Beyond the System Boundary A1 to D3**

The next section discusses product results cradle to fate A1 to C4 and to D3 beyond the system boundary/kg Functional Unit.

Figure 5 charts fossil and renewable energy use and fossil feedstock use versus GWP. Figure 6 charts Freshwater use (FW<sub>net</sub>) Vs Acidification (AP) and Terrestrial Eutrophication (EP<sub>land</sub>).



**Figure 5 GWP vs Energy & Feedstock A-D/kg      Figure 6 FW Vs AP, EP & A-D/kg**

Figure 5 shows low GWP overall. It shows flows with minor credits in energy reuse beyond 20-years. Chart 6 shows Acidification and EP peak with cleaning in D1 reuse beyond 20-years.

## References

- [1] EN 15804:2012+A2:2019 Sustainability of construction works - Environmental product declarations - Core rules for the product category of construction products.
- [2] GreenTag PCR <https://www.globalgreentag.com/get/files/1191/wall-ceiling-linings-sub-pcr-wcl.pdf>
- [3] GreenTag PCR <https://www.globalgreentag.com/get/files/1189/fitted-cabinetry-sub-pcr-2023-fic.pdf>
- [4] ISO 14025:2010 Environmental labels and declarations – Type III – environmental declarations - Principles and procedures.
- [5] ISO14044:2006 Environmental management – Life cycle assessment (LCA) – Requirements and guidelines.
- [6] ISO 15686-2:2012 Buildings and constructed assets - Service life planning - Part 2: Service life prediction procedures.
- [7] ISO 15686-8:2008 Buildings and constructed assets - Service-life planning - Part 8: Reference service life and service-life estimation.
- [8] IPCC 2013, Global Warming Potential 100-year, IPCC Fifth Assessment Report Climate Change.
- [9] WMO 2014, Ozone Depletion Potentials for Steady-state, Scientific Assessment of Ozone Depletion: 2014, Global Ozone Research and Monitoring Project Report No. 55, 2014.
- [10] Van Zelm, R., Huijbregts, M., Hollander, H., Jaarsveld, H., Sauter, F., Struijs, J., Wijnen, H., Van de meent, D. 2008, European characterization factors for human health damage of PM10 and ozone in life cycle impact assessment, J O Atmospheric Environment 42(3):441-453, as applied in ReCiPe LOTOS-EUROS. <https://doi.10.1016/j.atmosenv.2007.09.072>
- [11] Seppälä, J., Posch, M., Johansson, M. and Hettelingh, J-P. 2006 Country-dependent Characterisation Factors for Acidification and Terrestrial Eutrophication Based on Accumulated Exceedance as an Impact Category Indicator, T Int J O LCA 11(6):403-416 Nov 2006 <https://doi.10.1065/lca2005.06.215>
- [12] Posch, M., Seppälä, J., Hettelingh, J-P., and Johansson, M., (2008) The role of atmospheric dispersion models and ecosystem sensitivity in the determination of characterisation factors for acidifying and eutrophying emissions in LCIA, Sept 2008, I J of Life Cycle Assessment 13(6):477-486., <https://doi.10.1007/s11367-008-0025-9>
- [13] Struijs, J., Beusen, A., van Jaarsveld, H. & Huijbregts, M.A.J. (2009b). Aquatic Eutrophication. Ch 6 in: Goedkoop, M., Heijungs, R., Huijbregts, M.A.J., De Schryver, A., Struijs, J., Van Zelm, R. (2009). ReCiPe 2008 A LCIA method which comprises harmonised category indicators at the midpoint and the endpoint level. Report I: Characterisation factors, 1<sup>st</sup> Ed.
- [14] CML–IA V4.1 LCA methodology, 2002, October 2012, CML University of Leiden, Netherlands.
- [15] Guinée et al., 2002, and van Oers et al., 2002 CML LCA methodology 2002a, Institute of Environmental Sciences (CML), Faculty of Science, University of Leiden, Netherlands.
- [16] Boulay, A-M., Bare, J., Benini, L., Berger, M., Lathuilliere, M., Manzardo, A., Margni, M., Motoshita, M., Núñez, M., Pastor, A., Ridoutt, B., Oki, T., Worbe, S., Pfister, S. (2018). The WULCA consensus characterization model for water scarcity footprints: assessing impacts of water consumption based on available water remaining (AWARE). I J of LCA. 23. 1-11. <https://doi.10.1007/s11367-017-1333-8>